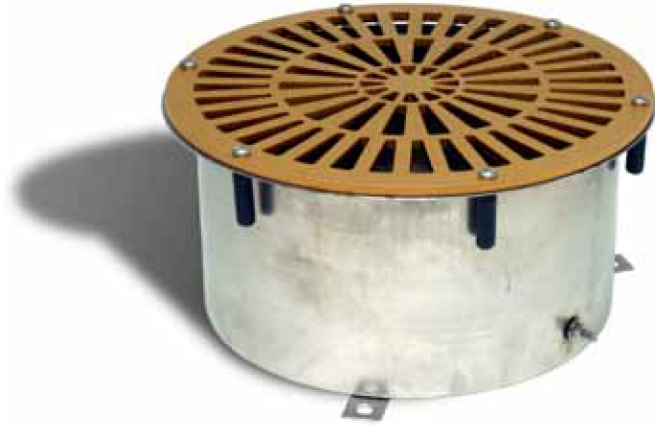


# FDR-400-BR

## Bronze Area Drain

### Product Description:

Designed to enhance Fountain in a Can™ installations. Precision machined brass grate finished to match Fountain in a Can™ top. Grate is ADA compliant. Deep drawn stainless steel sump with ground screw and stainless steel fasteners. 4" FPT connection (specify side or bottom).



# FDR-400-SS

[www.fountainpeople.com](http://www.fountainpeople.com)

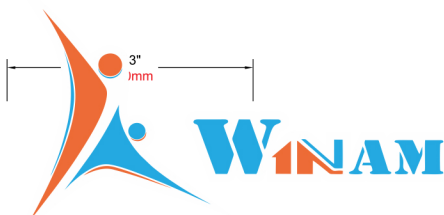
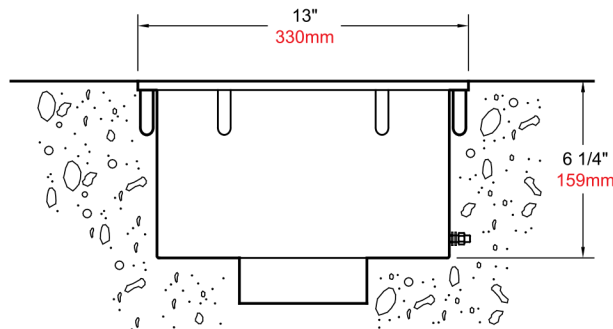
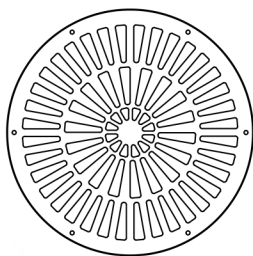
## Stainless Steel Area Drain

### Product Description:

Designed to enhance Fountain in a Can™ installations. Stainless steel grate finished to match Fountain in a Can™ top. Grate is ADA compliant. Deep drawn stainless steel sump with ground screw and stainless steel fasteners. 4" FPT connection (specify side or bottom).



## Dimensions:



**WINAM CONSTRUCTION CORP**

[www.winamgroup.com](http://www.winamgroup.com)  
[info@winamgroup.com](mailto:info@winamgroup.com)

Catalog #

Details

Project

Prepared by

Date

V1.3