

Dolphin Wireless Stopwatch System



Dolphin is a proven wireless timing system with a fully integrated Hy-Tek Meet Management interface.

Dolphin provides wireless stopwatch-style timing for swimming competitions. It significantly reduces the amount of effort required to run a meet and manage data. By transferring all timing data wirelessly, the system has improved accuracy compared to manual stopwatches.

Three modes of operation:

Electronic synchronized start/manual stop

Connect the starter unit to any CTS electronic start system. All watches will start timing with the start system signal. Each watch stops when the lane timer stops it.

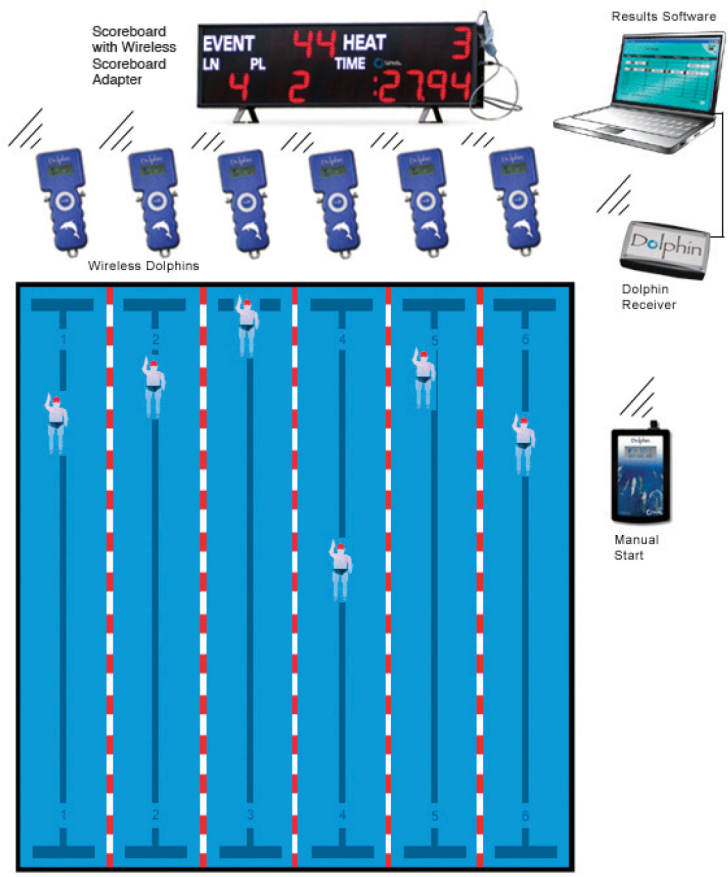
Manual synchronized start/manual stop

The official with the starter unit starts all watches in conjunction with the whistle. Each watch stops when the lane timer stops it.

Manual start/manual stop

This mode is used for collecting backup times at major events, and is compliant with all swimming ruling bodies' (FINA, NCAA, USS, NFHS, YMCA) requirements for backup timing. Lane timers start and stop the watches independently for a fully manual system.

In all three operation modes, finish times are wirelessly transmitted and recorded.



The Dolphin system includes:

Handheld wireless stopwatches for each lane (the system supports up to 3 lane timers per lane, and up to 10 lanes)

Starter unit for synchronized manual or electronic starts

Base unit, which connects via USB cable to your laptop running Hy-Tek Meet Manager and Dolphin software

Dolphin software

Dolphin split feature

Dolphin supports multiple split times (up to 10 per race, per participant) for use in competition and training. Split times are displayed on the scoreboard and keep the audience involved during the course of the event. At the conclusion of each race, a log file is created and can be reviewed at a later time by the coaches and athletes.

“Speaking as a Meet Referee for 25 years, I absolutely love the Dolphin System. After working high school and USA swim meets where the results are available shortly after the meet ends to check over, summer league was always dreaded due to the long wait for scorers to input the times from the lane timer sheets. Our league (MSSL) requires that the Meet Referee and coaches sign the final score sheets. I have had to wait up to an hour for the results to be finalized. So, speaking from an official’s standpoint, I love the Dolphin system.”



WINAM CONSTRUCTION CORP

www.winamgroup.com
info@winamgroup.com

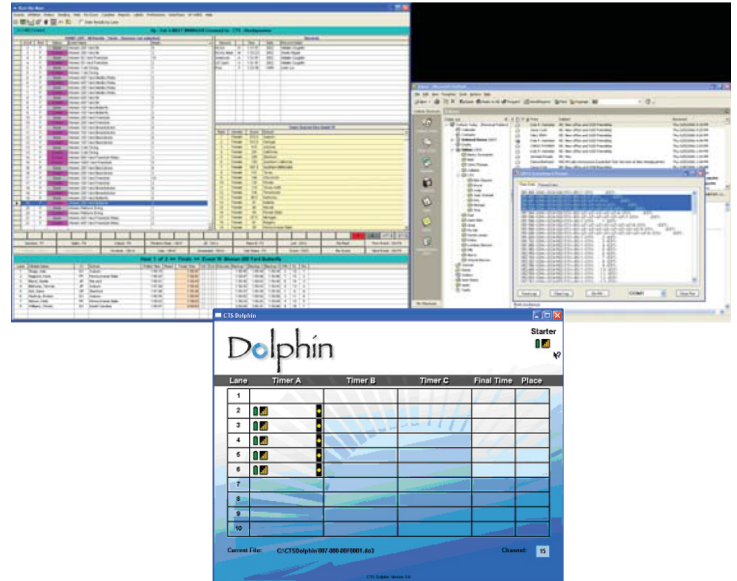
“We use the Dolphin system as a backup system (as opposed to primary). When a race ends, all four times (pad, button, Dolphin 1 and Dolphin 2) are pulled in by the scorer. Once the relay is finished, we are literally giving the backup to the opposing coach in less than a minute. I am amazed at how seamless the three systems (MM, Dolphin, and CTS equipment) work together.”

--Bob Stanley
Dedham Recreation

Hy-Tek MM Interface

Colorado Time Systems and Hy-Tek Sports Software partnered to provide a fully integrated Hy-Tek user interface with Dolphin, so you will not need to learn a new meet management program.

You have the option to use Hy-Tek MM and Dolphin together as the primary timing system, or as a backup timing system with the click of a button.



Dolphin Scoreboard Adapter



The Dolphin Scoreboard Adapter (shown with portable scoreboard) allows your CTS LED numeric scoreboard to wirelessly receive results from the Dolphin system and display race data.

Who can use Dolphin?

Everyone. Whether you use Dolphin in competition or practice, as your primary or backup system; Dolphin is an accurate, wireless, and effortless timing solution. Dolphin will save you time and improve your accuracy, simply by connecting the base unit to your laptop.

Complete Dolphin Solution



Get a complete Dolphin solution for your team today!

Pair your Dolphin System with the Infinity Start System, tripod, cable set (Infinity to Dolphin), portable scoreboard with two line display (event/heat and lane/place/time), wireless scoreboard adapter, and carrying case.

Dolphin Configurations

6-lane, 1 watch per lane WTS-D1061
6-lane, 2 watches per lane WTS-D1062
6-lane, 3 watches per lane WTS-D1063

10-lane, 1 watch per lane WTS-D1101
10-lane, 2 watches per lane WTS-D1102
10-lane, 3 watches per lane WTS-D1103

8-lane, 1 watch per lane WTS-D1081
8-lane, 2 watches per lane WTS-D1082
8-lane, 3 watches per lane WTS-D1083

Each system includes the specified number of watches, base unit, starter unit, and Dolphin software.

Requirements: Hy-Tek Meet Manager, laptop

Accessories: Carrying case, lanyard, spare watch, portable LED scoreboard, wireless scoreboard adapter

Specifications:

Wireless: 2.4GHz 16 channels, spread spectrum

Watch dimensions (L x W x D)

6.06" x 2.69" x 1.06"

15.3cm x 6.8cm x 2.7cm

RoHS compliant

Battery: standard 9V; ~ 40 operating hours

Weight: 6.9 oz (195g)

U.S. Patent Nos: 7,821,876 and 8,085,623



WINAM CONSTRUCTION CORP

www.winamgroup.com

info@winamgroup.com